



**PROJECT NUMBER**

02

AKT 04.05.14

Checked: -  
Approved: -  
Scale: -

Material: ZINCANNEAL

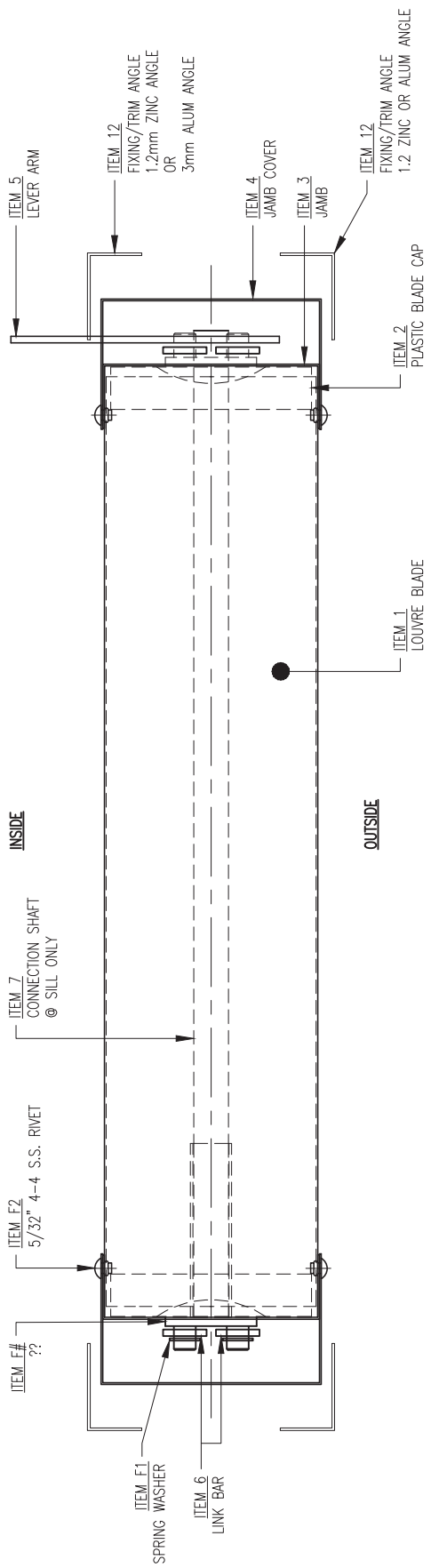
Finish: COLOUR: TBA

Project: PROJECT NAME  
Client: CLIENT NAME  
Description: EASIFLOW OPERABLE LOUVRE SECTIONS  
LOUVRE NAME

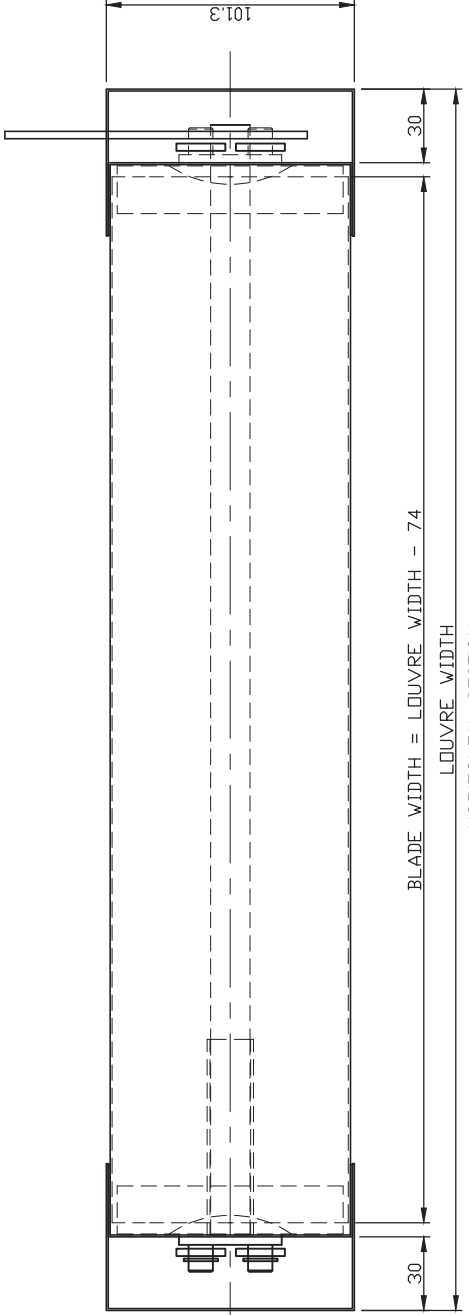
**Austral Monsoon Building Products Pty Ltd**  
PTY LTD  
ACN 083 857 452 ACN 083 857 452  
181-185 COBALT STREET, CAROLE PARK, QLD 4300  
PO BOX 230, CAROLE PARK, QLD 4300

These drawings are the property of Austral Monsoon Building Products and are not to be reproduced in whole or part without permission of Austral Monsoon Building Products Pty Ltd. A.C.N. 083 857 452 © Copyright 1999

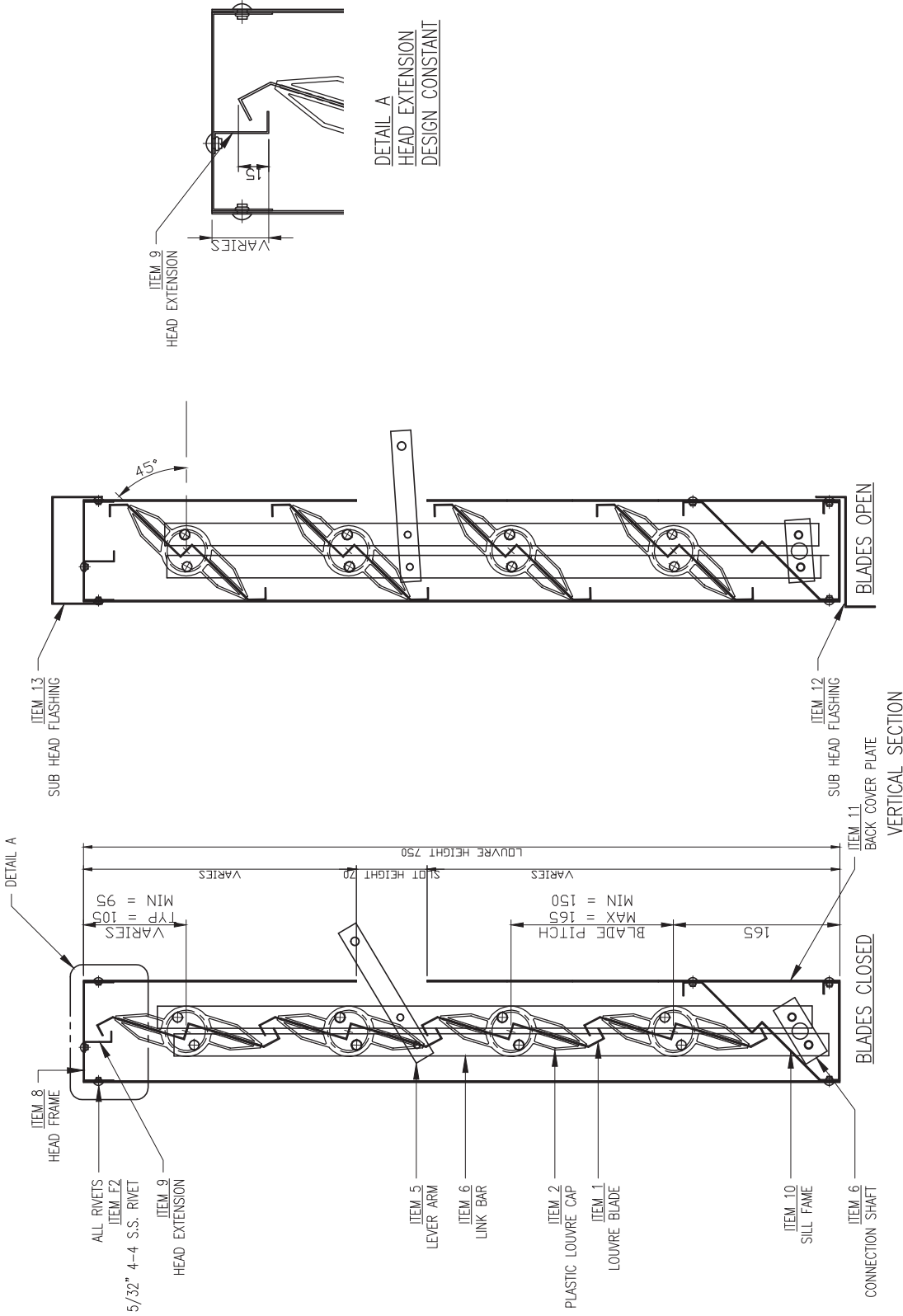
Rev	Description	Date
0		



HORIZONTAL SECTION  
ITEM CALL OUT



HORIZONTAL SECTION



<b>Rev</b>	<b>Description</b>	<b>Date</b>	<b>Project</b>		<b>Material:</b>	<b>Job No.</b>	<b>PROJECT NUMBER</b>
			<b>IF IN DOUBT - ASK 3rd ANGLE PROJECTION</b>	<b>PROJECT NAME</b>	ZINCANNEAL	AKT 04.05.14	
				<b>Client</b>	<b>Finish:</b>	<b>Checked:</b>	
				<b>Description</b>	COLOUR: TBA	<b>Approved:</b>	<b>Dwg Sheet No.</b>
				<b>LOUVER NAME</b>		<b>Scale:</b>	<b>02</b>
							<b>0</b>

**Austral Monsoon Building Products Pty Ltd**  
 PTY LTD  
 ACN 083 857 452 ACN 083 857 452  
 181-185 COBALT STREET, CAROLE PARK, QLD 4300  
 PO BOX 230, CAROLE PARK, QLD 4300

These drawings are the property of Austral Monsoon Building Products and are not to be reproduced in whole or part without permission of Austral Monsoon Building Products Pty Ltd. A.C.N. 083 857 452 © Copyright 1999